

HermanMiller

The Collection

Eames® Table Assembly

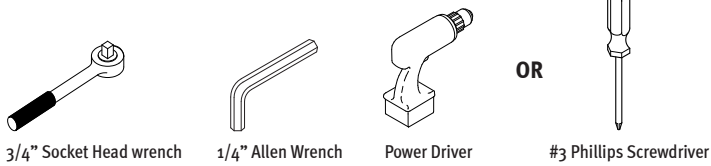


How to assemble your table.

For more information about our products and services or to see a list of dealers, please visit us at hermanmiller.com or call (800) 851 1196.

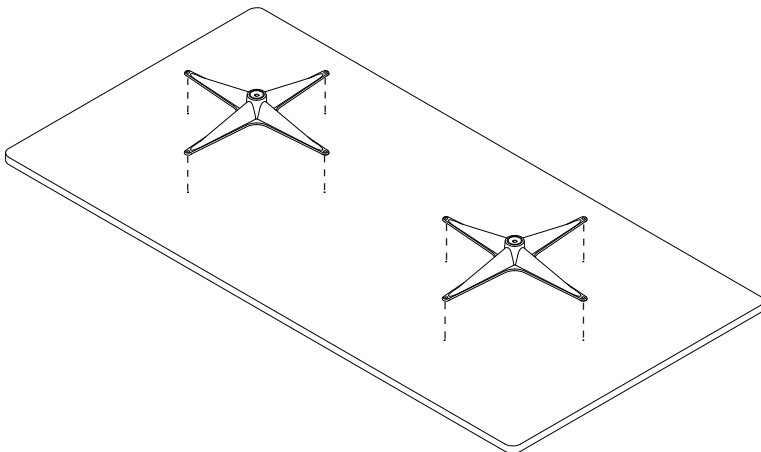
© 2013 Herman Miller, Inc., Zeeland, Michigan Printed in U.S.A. Part No. 400604 - L.
 © Eames are among the registered trademarks of Herman Miller, Inc.

Tools Required

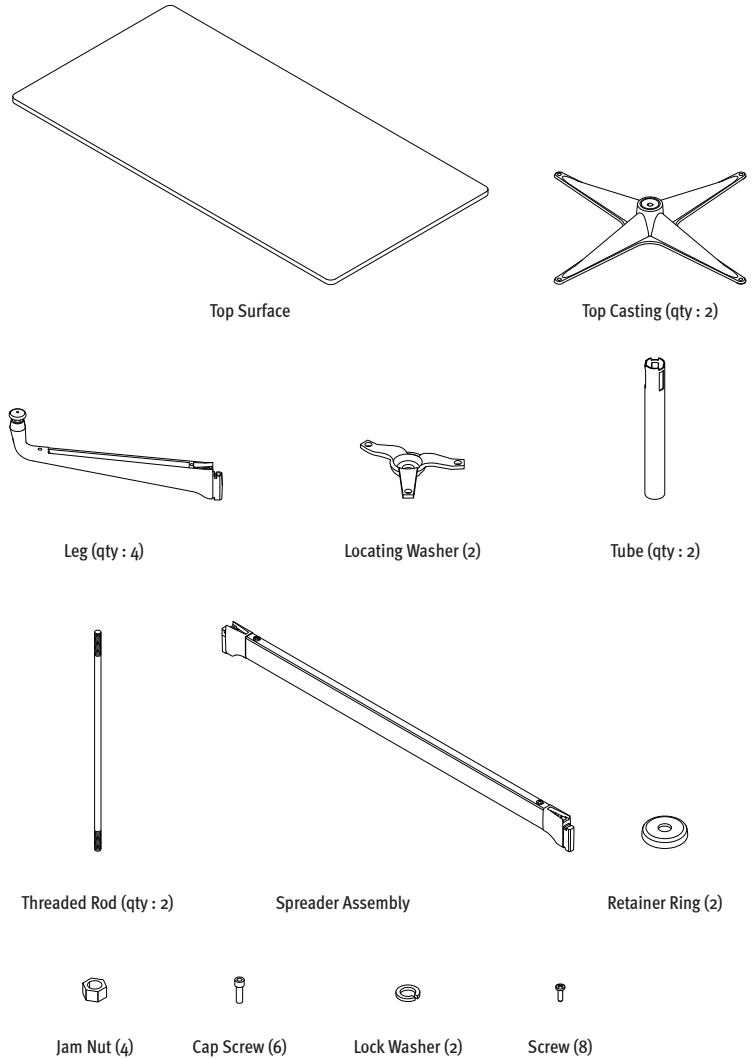


Step 1

- 1.1** Remove parts from carton using care to avoid damaging tabletop. Remove cardboard fillers and discard.
- 1.2** Invert table top on a clean padded surface.
- 1.3** Remove shipping rail, when attached, before attaching top casting(s).
- 1.4** Position top casting(s) on table top, align holes in top casting(s) with holes in table top.

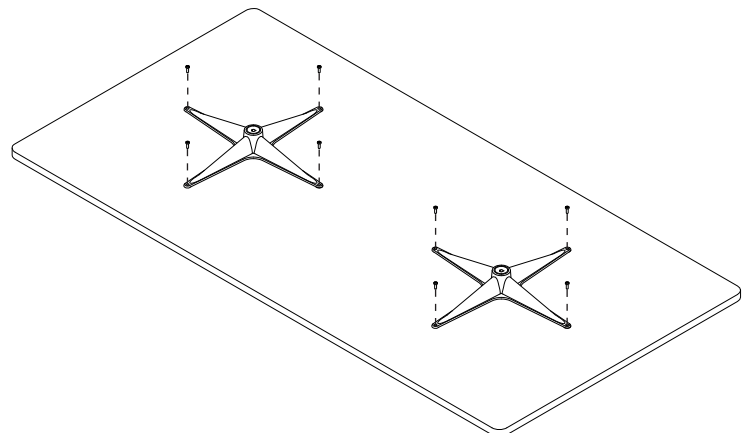


Parts Included



Step 2

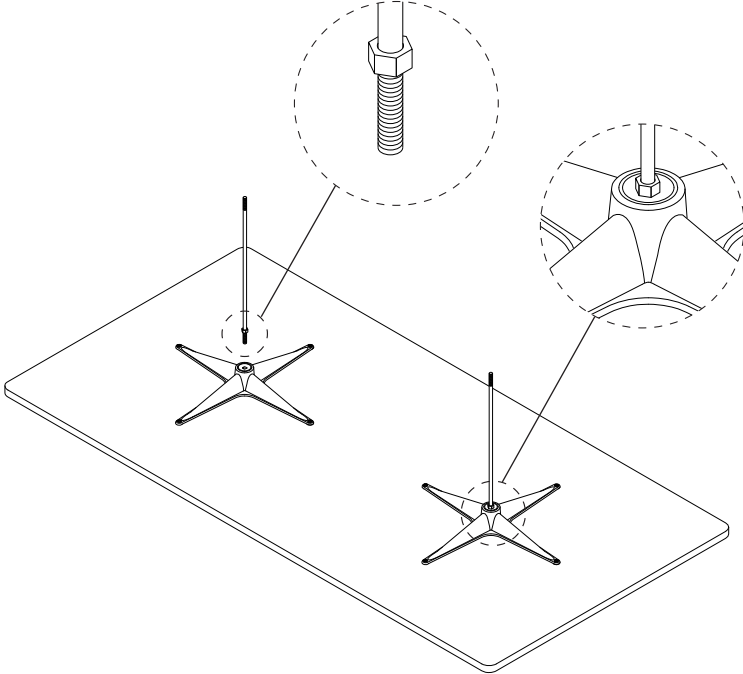
- 2.1** Insert (4) screws on each side and tighten.



Step 3

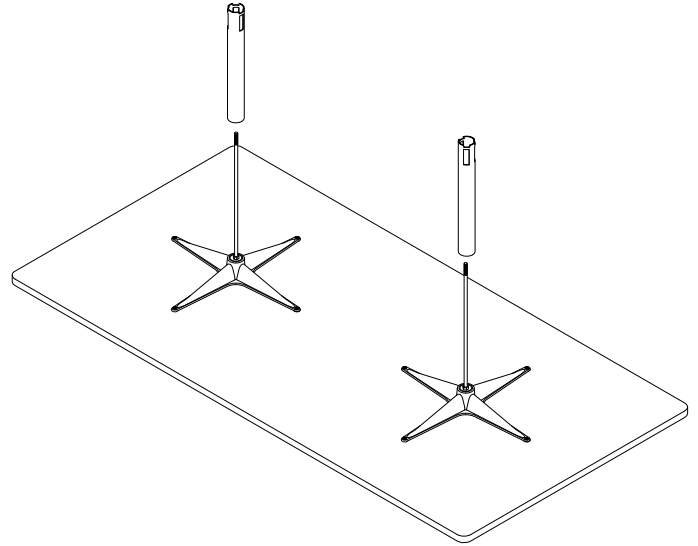
3.1
Thread jam nut on one end of threaded rod until jam nut stops.

3.2
Threaded rod end with jam nut all the way into the top casting. Tighten jam nut against top casting.



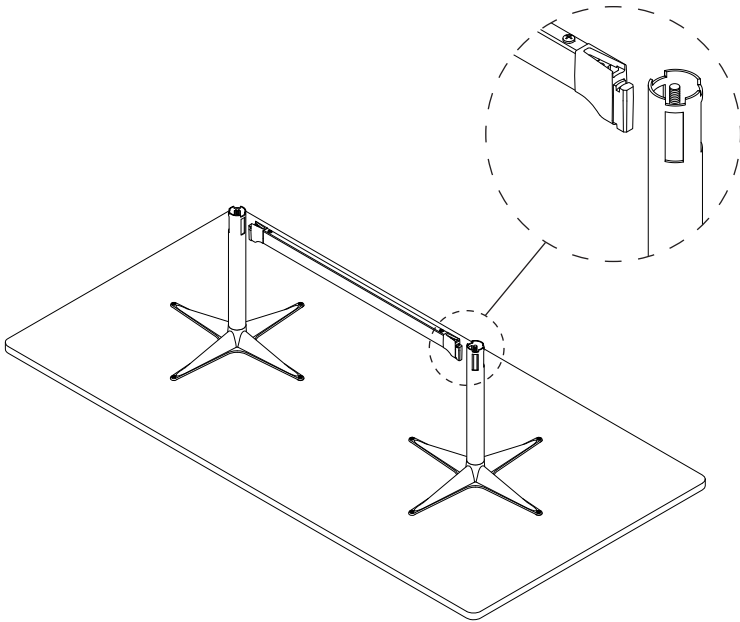
Step 4

4.1
Place tube over rod onto top casting.



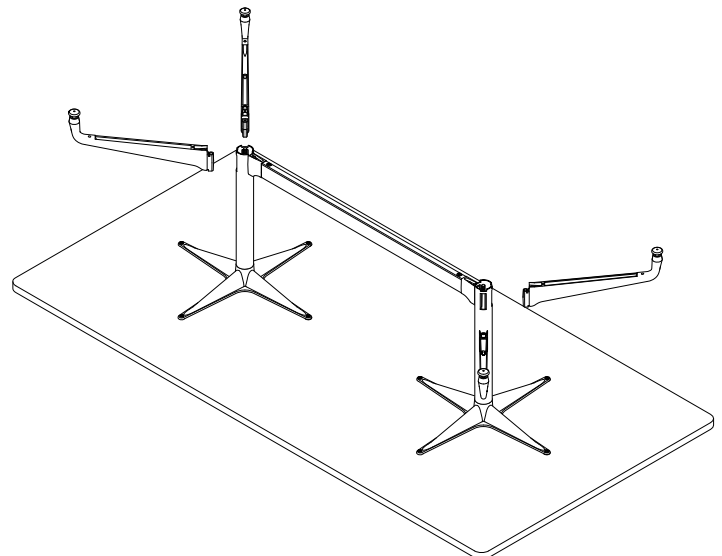
Step 5

5.1
Place spreader assembly into slot in tubes, when applicable.



Step 6

6.1
Insert legs into slots in the tubes.



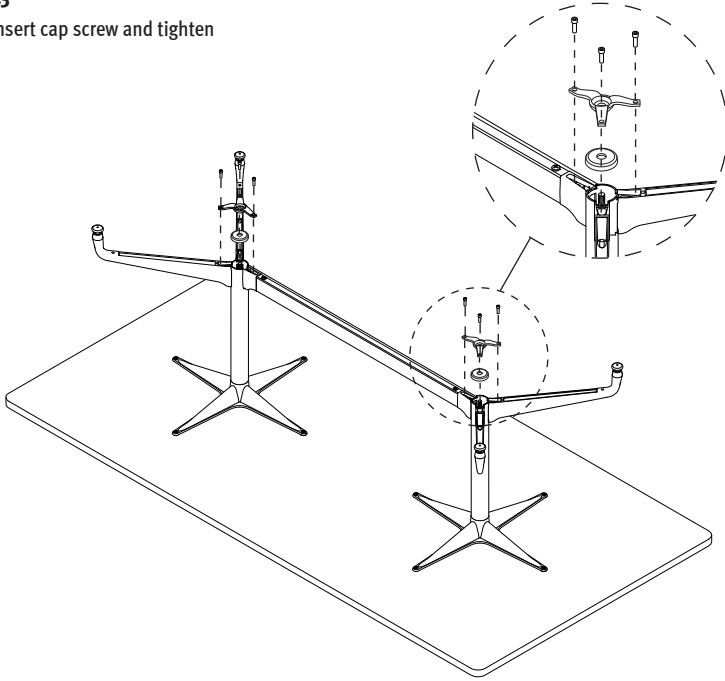
Step 7

7.1
Place retainer ring in slot on the legs and spreader assembly.

Note: Retainer ring fits inside of tube

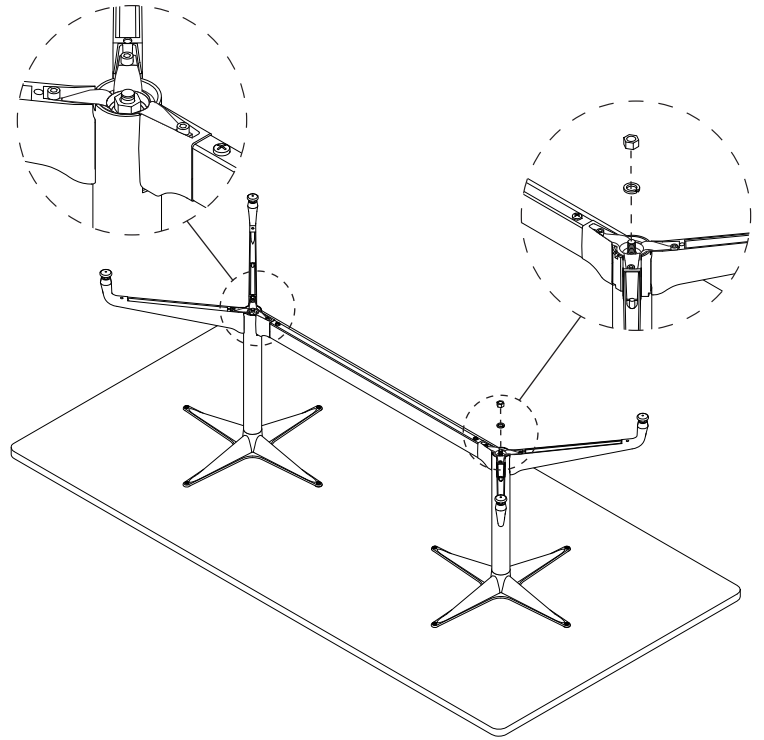
7.2
Place locating washer over legs and spreader assembly.

7.3
Insert cap screw and tighten



Step 8

8.1
Place lock washer and threaded nut on threaded rod and tighten the nut to 45 ft lbs.



Step 9

9.1
Place table in upright position.

