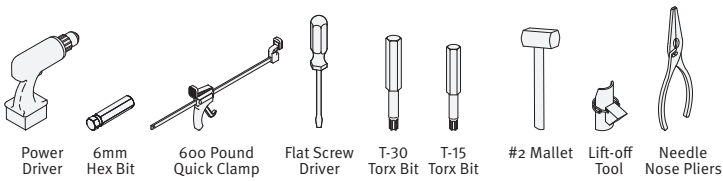




### How to recycle your cosm chair.

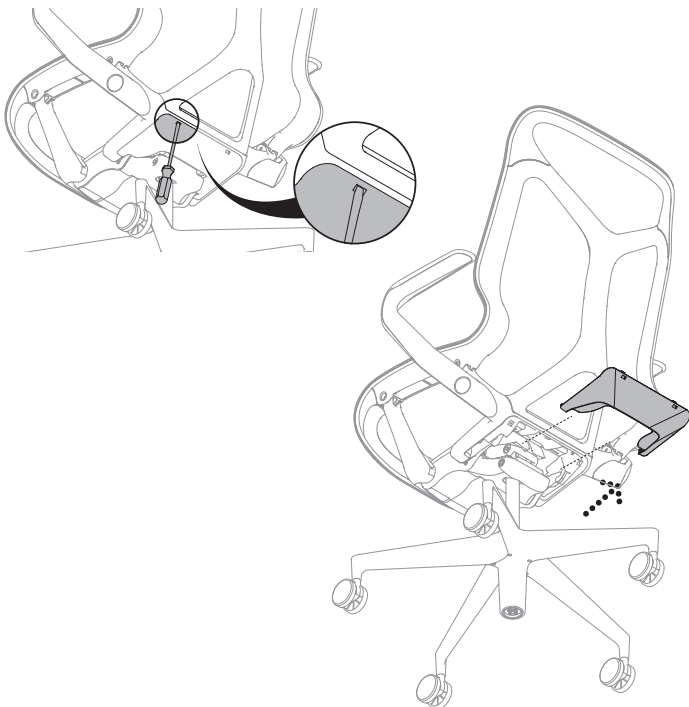
#### Tools Required



#### Step 2

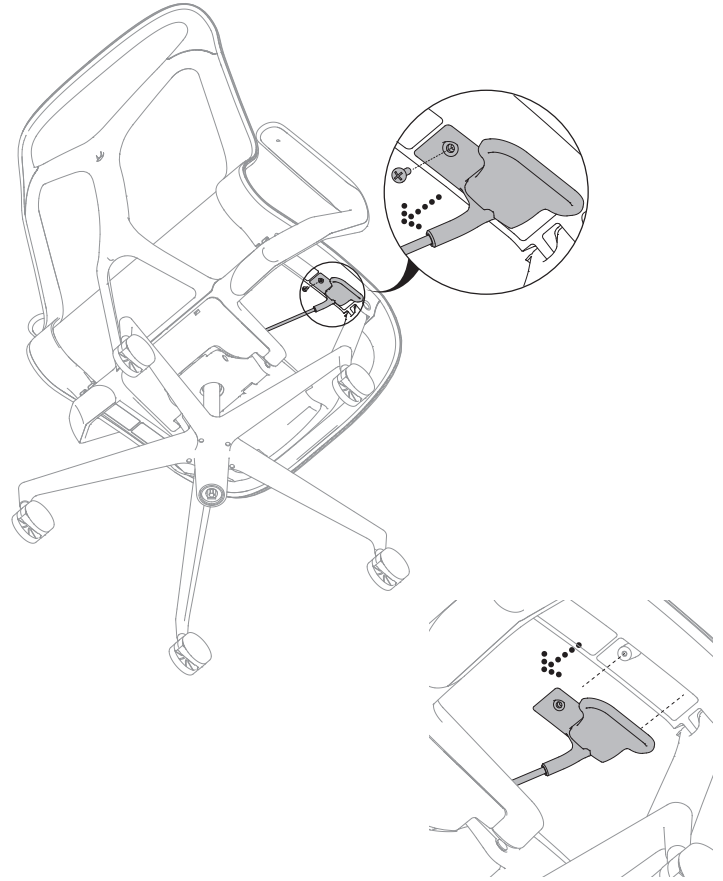
2.1 Insert the flat screw driver into the lower antler cover hole and gently pry down until both sides are released.

2.2 Pull and take out the lower antler cover.



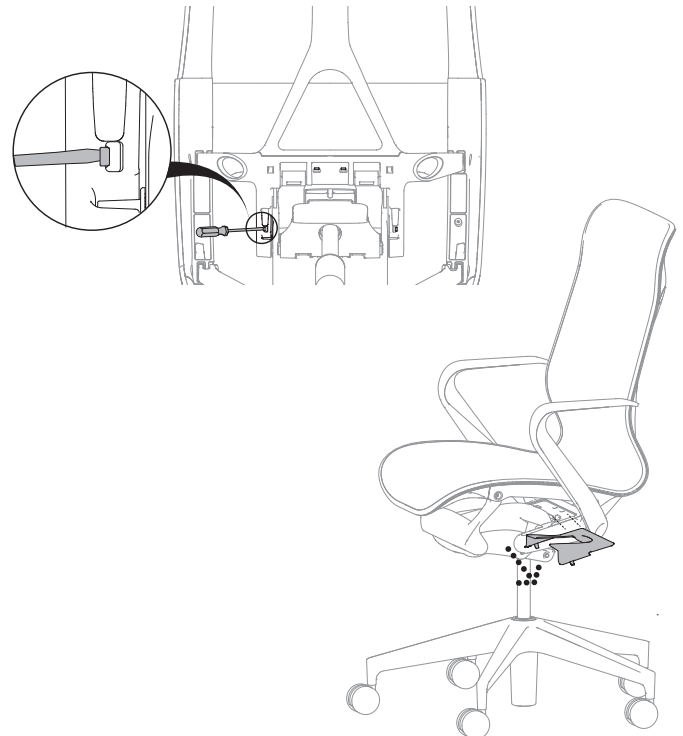
#### Step 1

1.1 Using T-15 Torx bit, unscrew the attachment bolt and remove the height adjust control down.



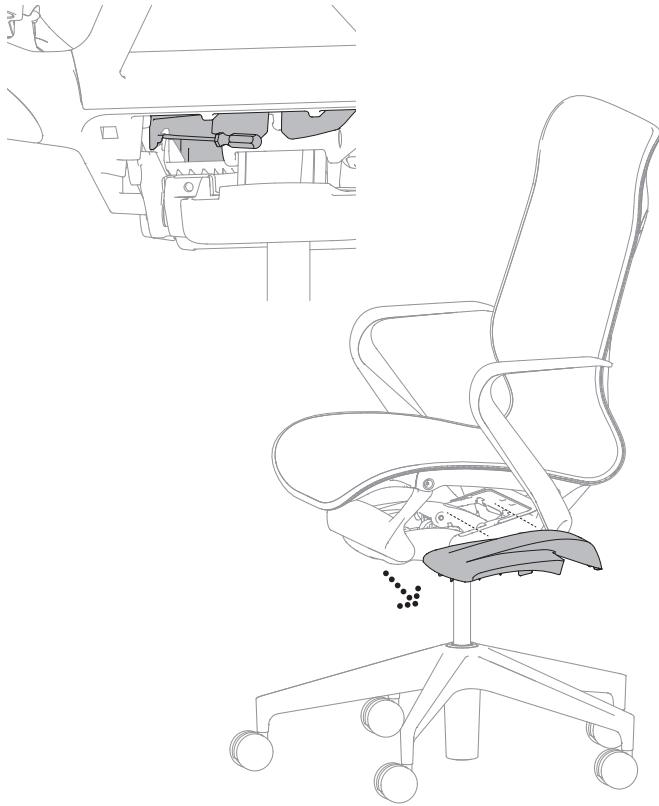
#### Step 3

3.1 Using flat screw driver, unhook the four tabs of upper antler cover and take out.



## Step 4

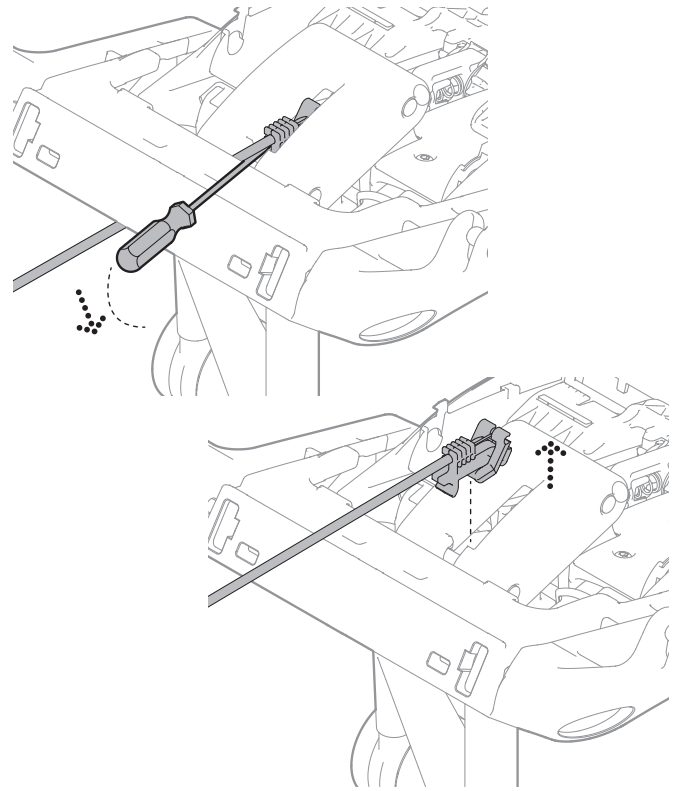
4.1 Using flat screw driver, lift up and pull out the tilt housing cover.



## Step 5

5.1 slide in the flat screw driver from back of the tilt and catch the back edge of cable actuator housing.

5.2 Pry down and pop the control loose to take out.

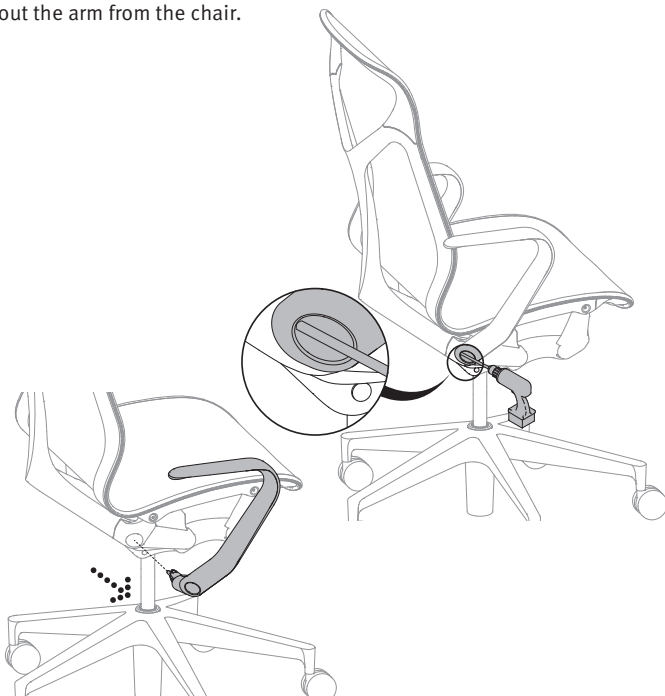


## Step 6

**Note: For no arm plug, follow steps from 8 to 9.**

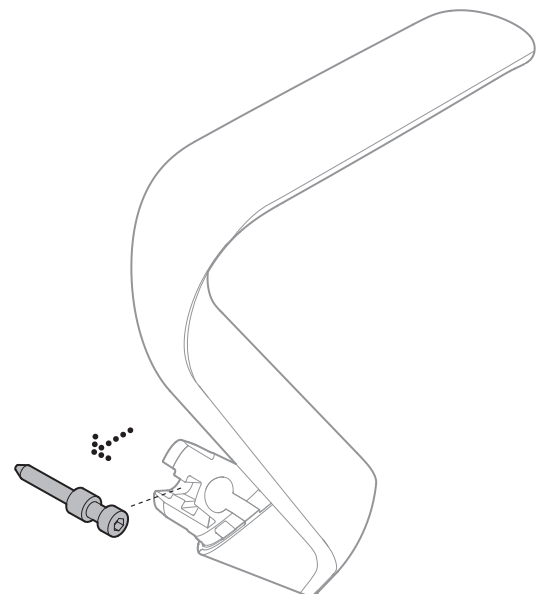
**For 1D arm, follow steps from 10 to 13**

6.1 Using power drive with 6mm hex bit which needs to be 6 inches long to take out the arm from the chair.



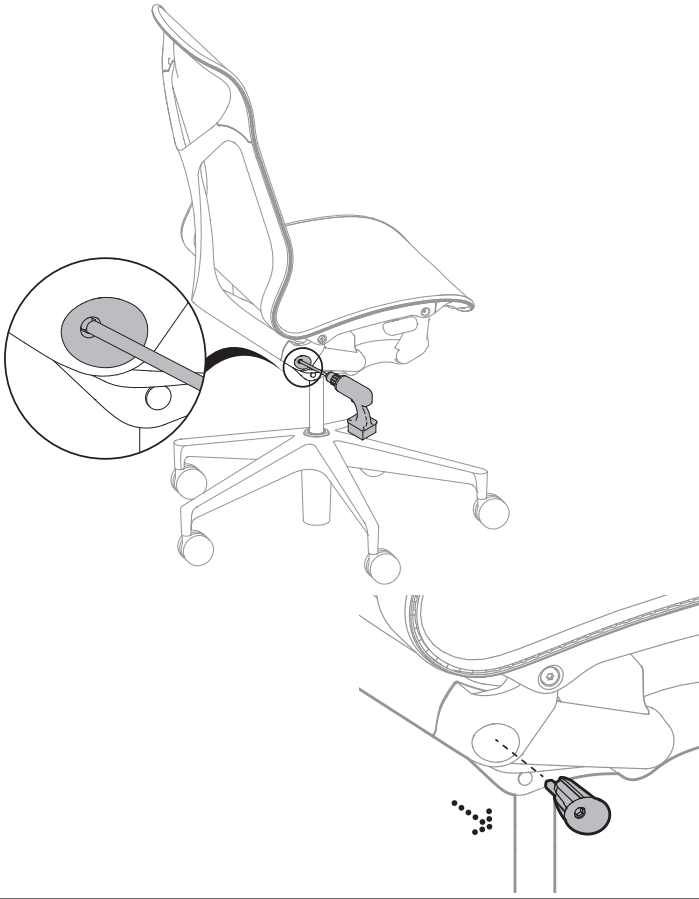
## Step 7

7.1 Take out the shoulder bolt from the fixed arm.



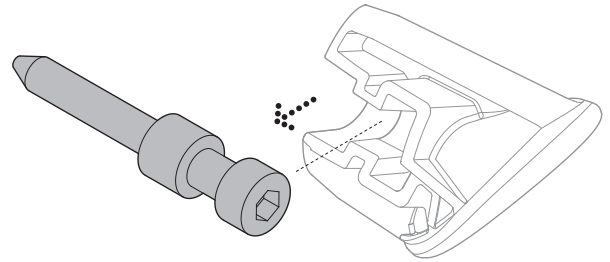
### Step 8

8.1 Using power drive with 6mm hex bit which needs to be 6 inches long to remove no arm plug from the chair.



### Step 9

9.1 Take out the shoulder bolt from the no arm plug.



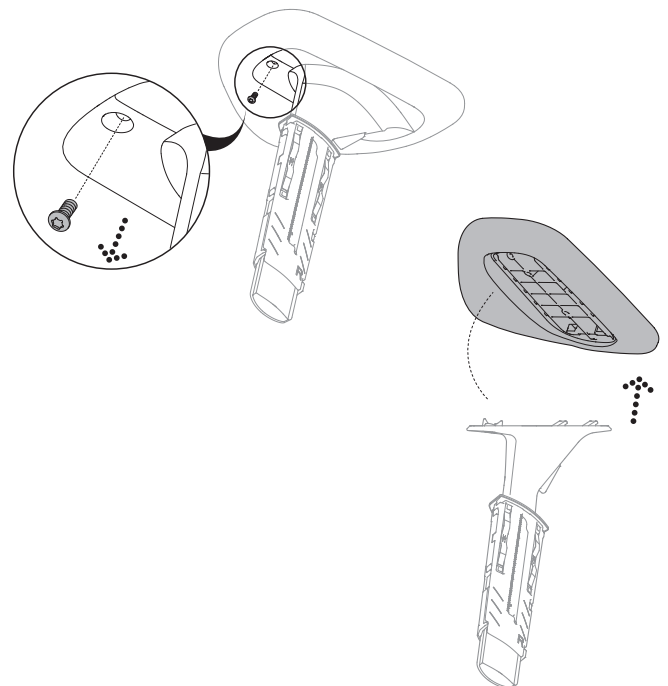
### Step 10

10.1 Insert the flat screw driver into the notch and gently pry against the latching tab and pull out the 1d upper arm assembly at the same time.



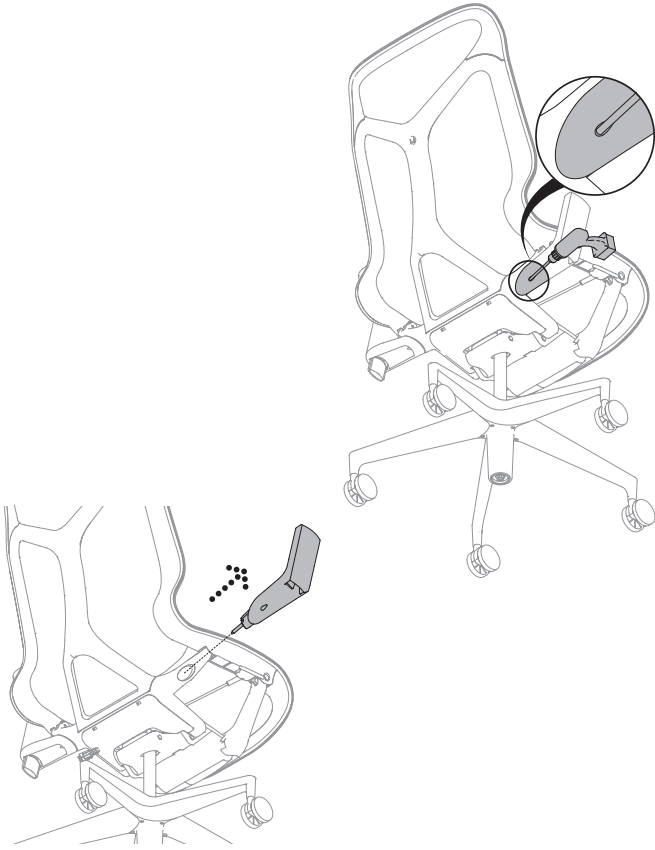
### Step 11

11.1 Using T-20 torx bit, unscrew the arm pad retainer bolt and take out the arm pad.



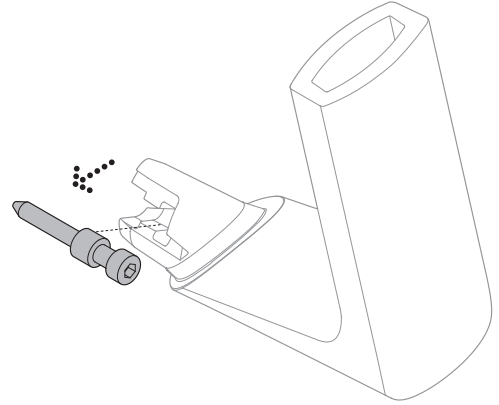
### Step 12

12.1 Add 2 inches extension to the power drive with 6mm hex bit which needs to be 6 inches long to remove 1d lower arm casting from the chair.



### Step 13

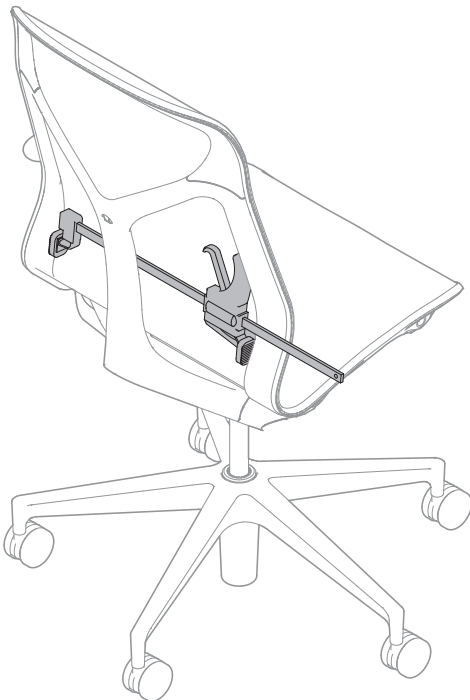
13.1 Take out the shoulder bolt from the 1d lower arm casting.



### Step 14

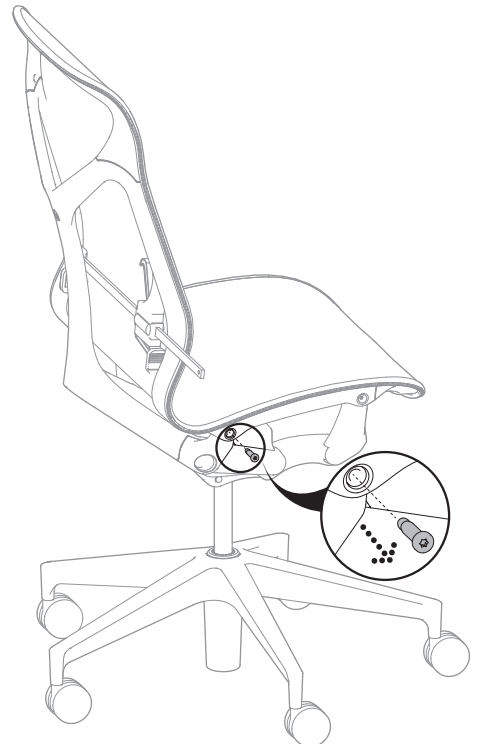
14.1 Place the 600 pound quick clamp with jaws reversed in between the frames of the chair and gently clamp until some resistance.

Note: Don't over stretch the frame.



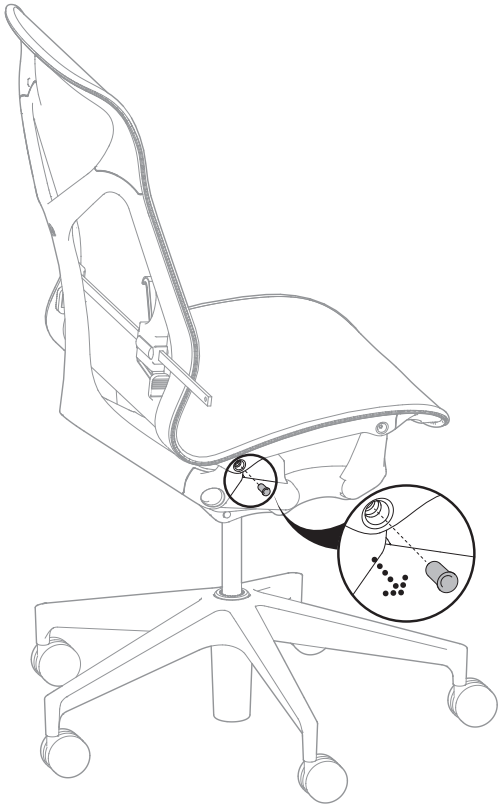
### Step 15

15.1 Remove the beam bolts using T-30 Torx bit.



## Step 16

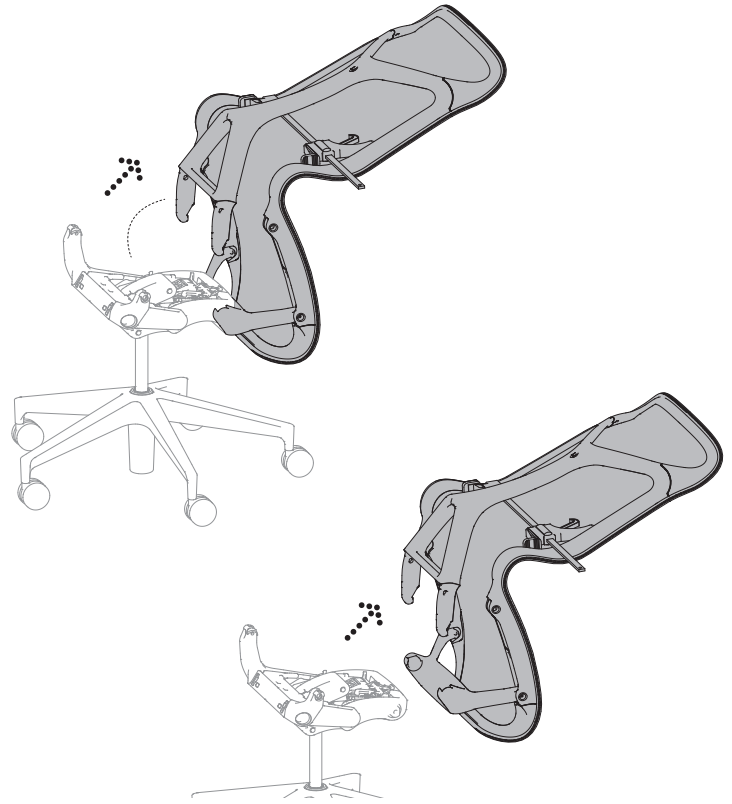
16.1 Remove the nylon bushing by using needle nose pliers.



## Step 17

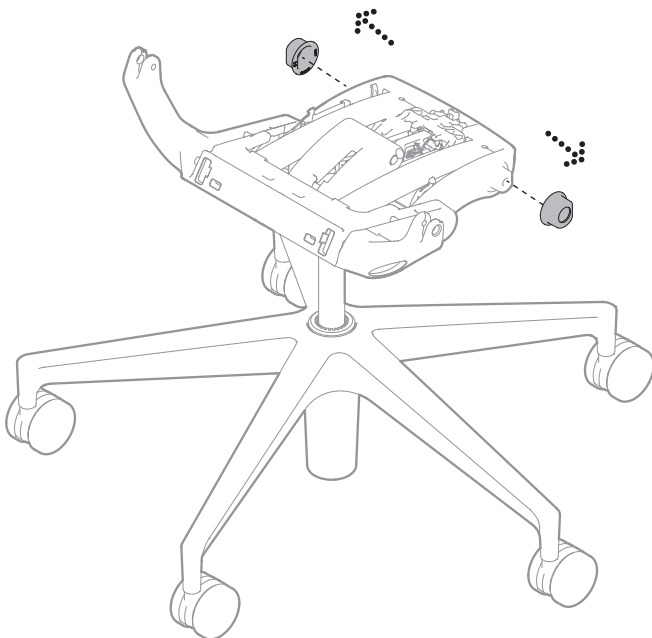
17.1 Pull out and up on the rear spine.

17.2 Rotate the entire chair forward and take out the back frame assembly.



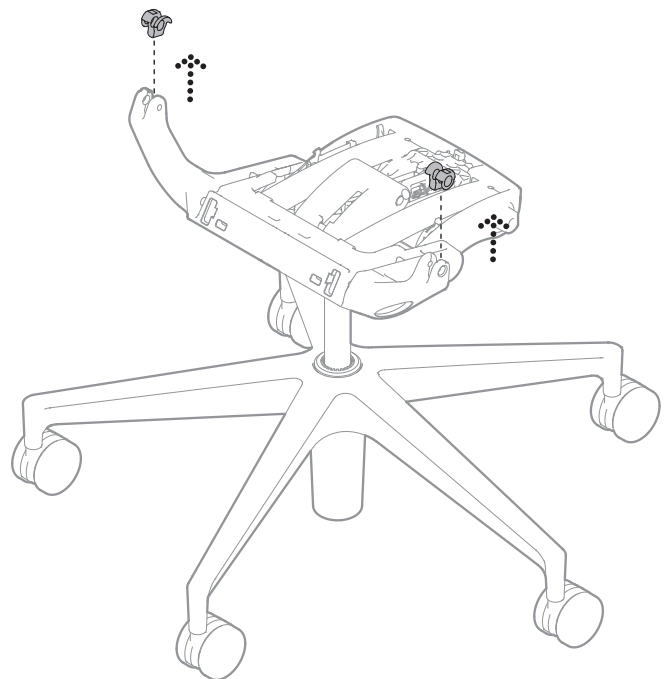
## Step 18

18.1 Take out the tilt bushing.



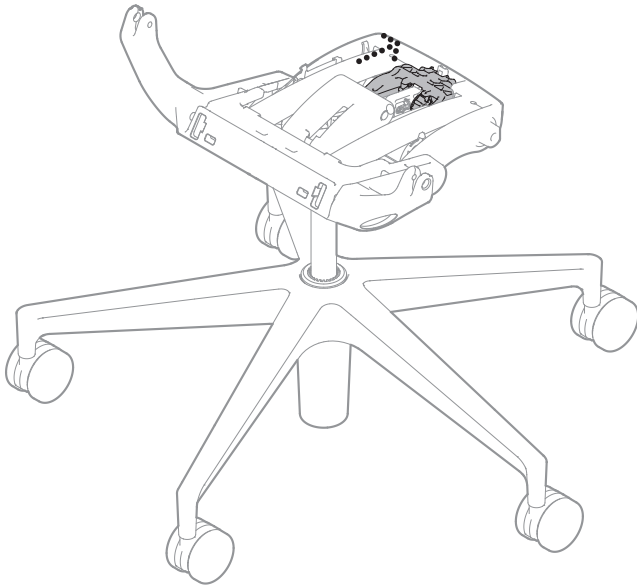
## Step 19

19.1 Take out the flange bushing.



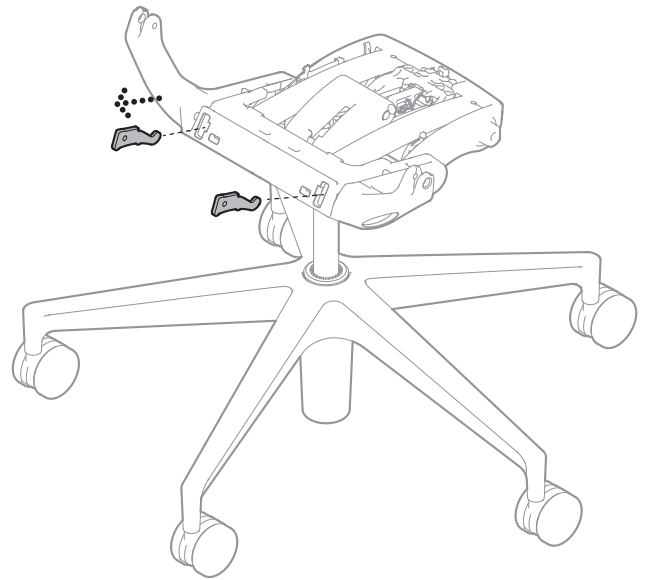
## Step 20

20.1 Make sure the tension block is all the way forward.



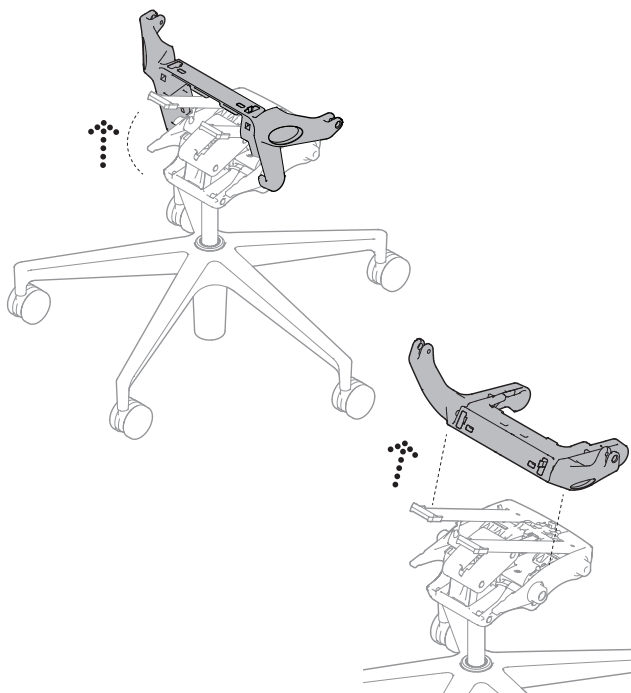
## Step 21

21.1 Place foot on the casting and apply pressure to the tilt and pull the steel plate out at the same time.



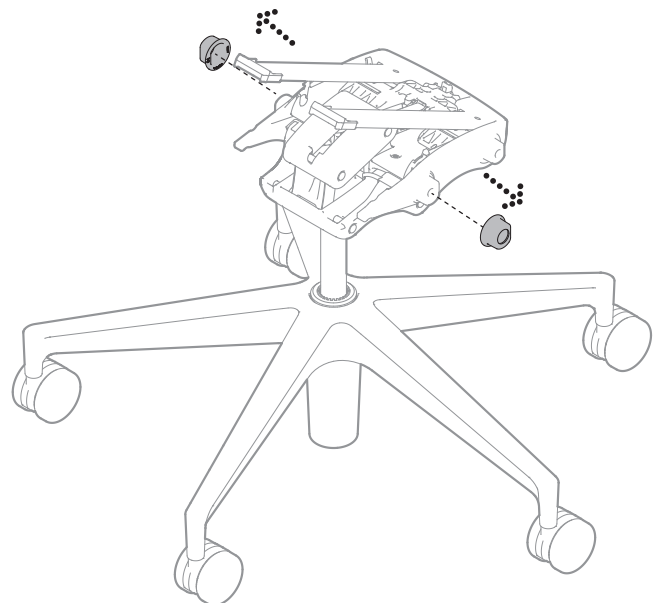
## Step 22

22.1 Remove the rear casting from the tilt.



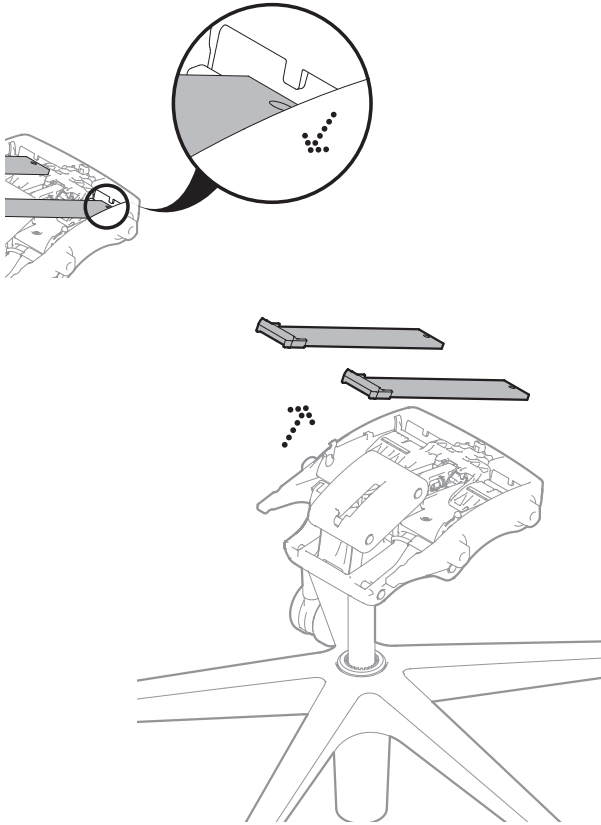
## Step 23

23.1 Take out the tilt bushing.



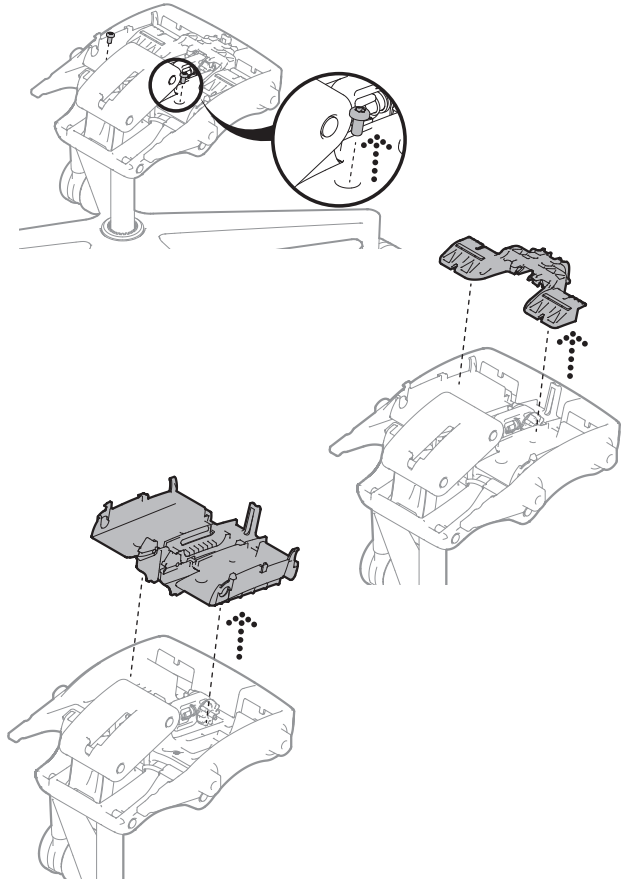
## Step 24

24.1 Take out the spring boards from tilt.



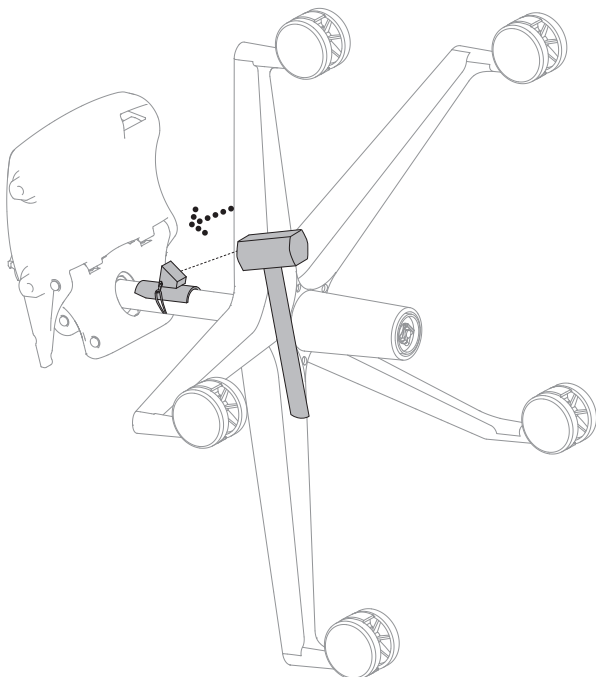
## Step 25

25.1 Remove the two screws from the tilt cassette to allow us to lift out the fulcrum and cassette.



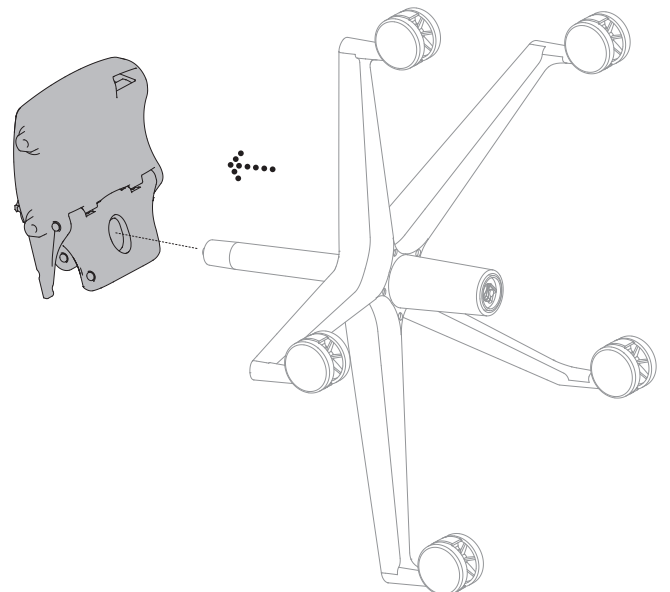
## Step 26

26.1 Place the lift-off tool by facing tapered edge against the bottom of the tilt and hit with mallet.



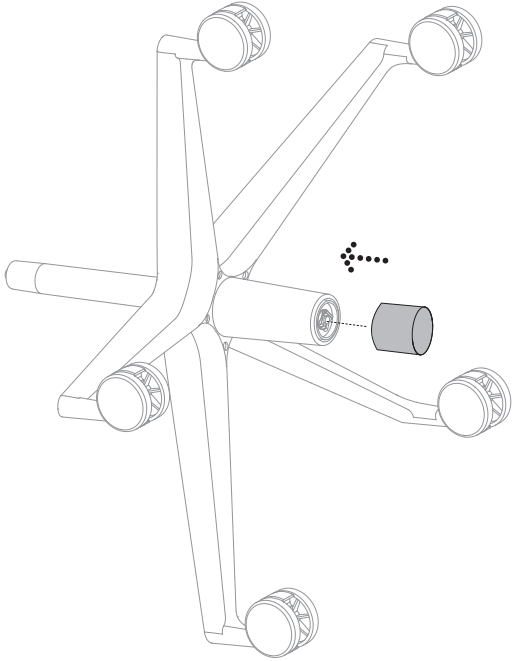
## Step 27

27.1 Remove the tilt from base.



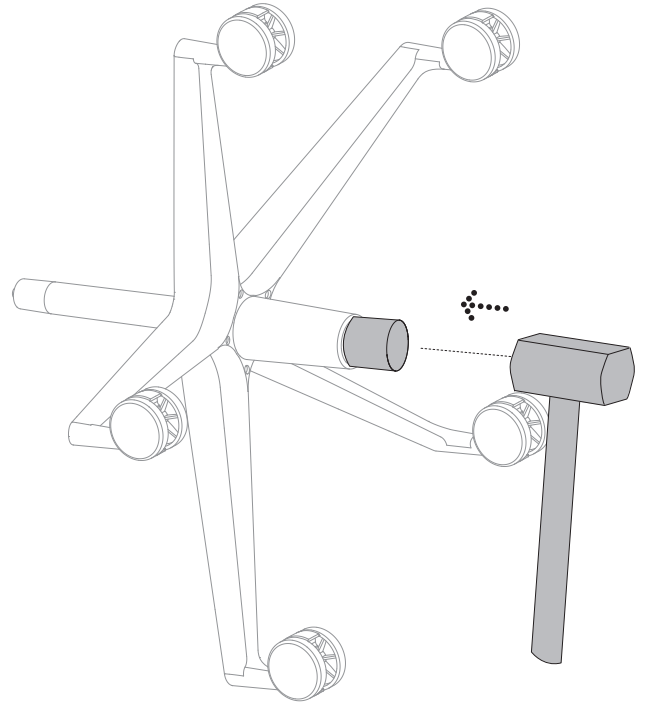
**Step 28**

28.1 Place nylon cap over the end of cylinder.



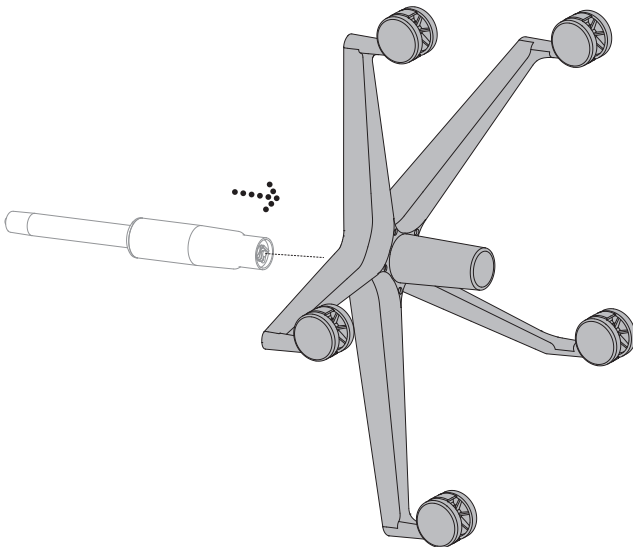
**Step 29**

29.1 Strike using a mallet on nylon cap to release the base from cylinder.



**Step 30**

30.1 Slide base off cylinder.



**Step 31**

31.1 Hold base and pull hard to remove caster from base.

