

HermanMiller

Sabha Collaborative Seating™ CMF Chip Chart

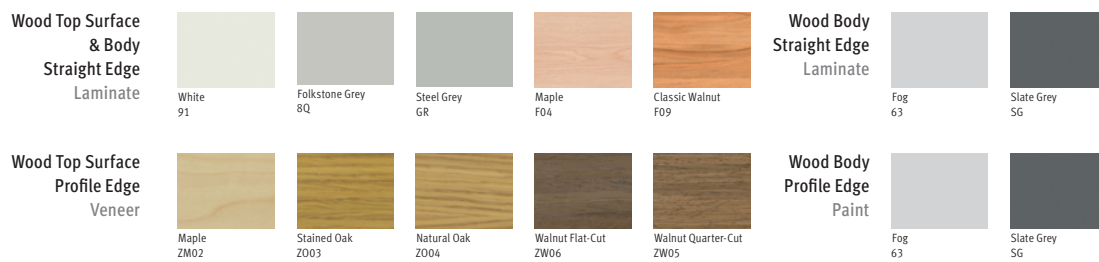


Finishes

Laminate

Workspaces

This sample is representative of the material to be supplied and may not indicate an exact match. The natural characteristics inherent in wood cause variations in grain, texture, and colour. The variations and subtle changes seen over time are values associated with natural materials.



Finishes

Metal

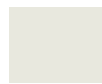
Workspaces

This sample is representative of the material to be supplied and may not indicate an exact match; some variation may occur.

Paint Finish



Chalk White
X1



White (Smooth)
91S



Graphite
G1



Metallic Silver
MS



Tribeca Green
IQ



Acqua
ID



Very Blue
IB



Pantone Yellow
IE



Tangerine Rush
IR



Scarlett
IH

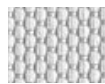
Textiles

Edge

WovenImage

Content : 100% Polyester
Width : 1480mm
Price Band : 2
Abrasion : 66,500 Martindale cycles
Flammability : AS1530.3
BS EN 1021.2 - 1994
CAL 117

Edge
Band 2



Silver
V3911



Citrus
V3919



Orange
V3917



Red
V3928



Rust
V3920



Berry
V3929



Bright Blue
V3930



Sky
V3935



Aqua
V3938



Leaf
V3931



French Navy
V3936



Lime
V3939



Stone
V3948



Light Grey
V3944



Putty
V3945



Mid Grey
V3951



Black
V3952



Anthracite
V3955



Chocolate
V3950



Magenta
V3956



Artichoke
V3962



Blue
V3960



Purple
V3977

Textiles

Era

Camira

Content : 100% Polyester Non-Metallic Dyestuffs

Width : 1400mm

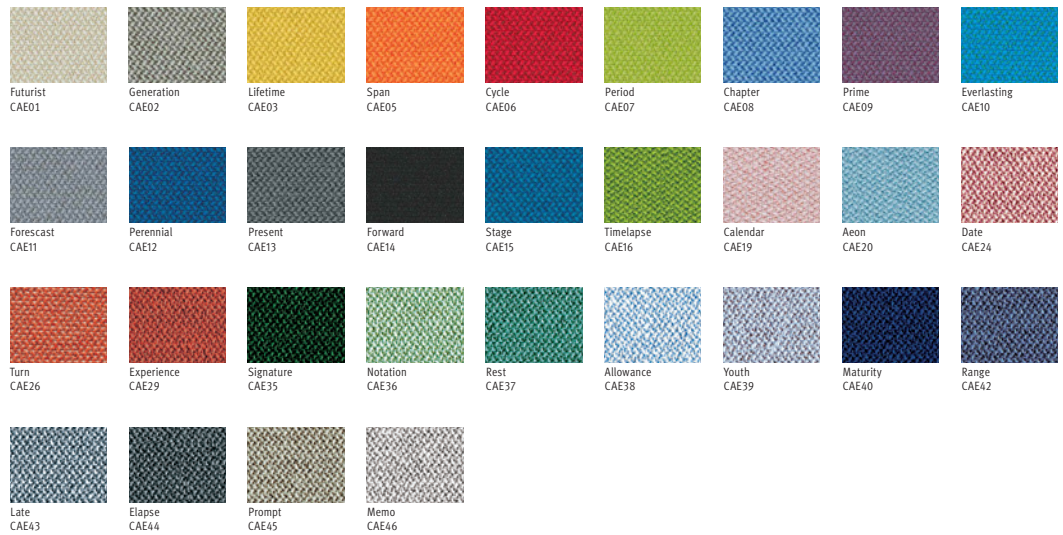
Price Band : 2

Abrasion : 100,000 Martindale cycles

Flammability : BS EN 1021-1:2014 cigarette

BS EN 1021-2:2014 match

Era
Band 2



Textiles

Medley

Gabriel

Content : 100% Polyester
Width : 1400mm
Price Band : 2
Abrasion : 75,000 Martindale cycles
Flammability : BS EN 1021 1&2 Cigarette & Match
BS 5852 Part 1 0,1 Cigarette & Match
CAL TB 117-2013
ASTM E84 Pass

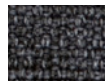
Medley
Band 2



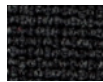
Stone
1HA01
#



Trail
1HA02
#



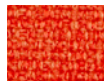
Charcoal
1HA03
#



Cinder
1HA04
#



Citrus
1HA05
#



Papaya
1HA06
#



Chutney
1HA07
#



Tundra
1HA08
#



Feather Grey
1HA09
#



Chartreuse
1HA10
#



Loden
1HA11
#



Peacock
1HA12
#



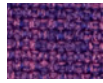
Bayou
1HA13
#



Blue Grotto
1HA14
#



Blueberry
1HA15
#



Mulberry
1HA19
#

Colours available for 20-days Program

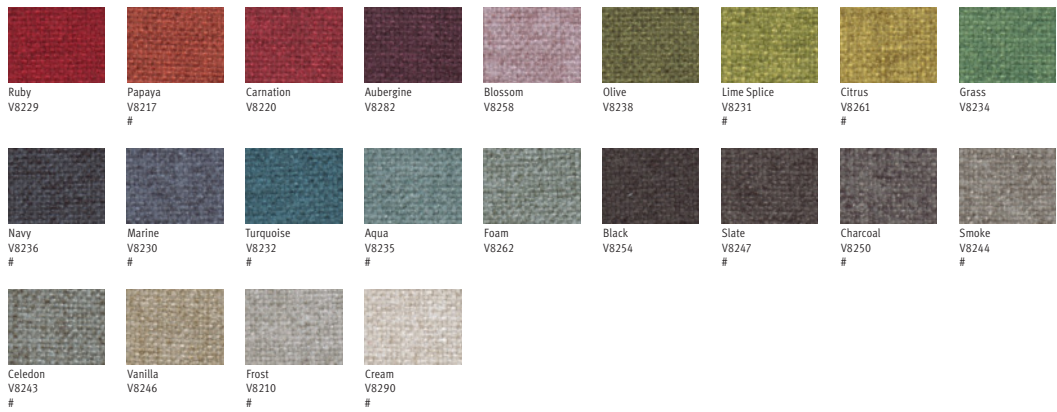
Textiles

Focus

WovenImage

Content : 100% Polyester
Width : 1400mm
Price Band : 2
Abrasion : 100,000+ Martindale cycles
Flammability : AS 1530.3
AS 3837 Rating: Group 1
BS 5852 Cigarette & Match
CAL 117-E

Focus
Band 2



Colours available for 20-days Program

Textiles

Focus HP

WovenImage

Content : 100% Polyester. Nano-tex™ + Durablock + BioAM treatments.

Width : 1400mm

Price Band : 3

Abrasion : 96,000 Martindale cycles

Flammability : AS 1530.3

Focus HP
Band 3



Papaya HP
V8417



Marine HP
V8430



Aqua HP
V8435



Smoke HP
V8444



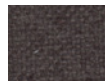
Vanilla HP
V8446



Blossom HP
V8450



Charcoal HP
V8454



Black HP
V8452



Citrus HP
V8461



Foam HP
V8462

Textiles

Flux

WovenImage

Content : 53% Cotton, 20% Linen, 20% Polyester, 7% Acrylic
Width : 1400mm
Price Band : 3
Abrasion : 50,000+ Martindale cycles
Flammability : AS1530.3
BS 5852, source 0 - 1
CAL 117

Flux
Band 3



Textiles

Global

WovenImage

Content : 100% Polyester
Width : 1450mm
Price Band : 3
Abrasion : 100,000+ Martindale cycles
Flammability : AS 1503.3
AS 3837 Class 1
BS EN 1021.1
CAL 1171

Global
Band 3



Silver
WIG101



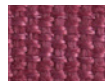
Yellow
WIG108



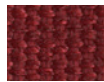
Poppy
WIG177



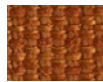
Steel
WIG210



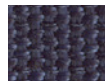
Pink
WIG213



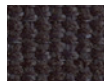
Ruby
WIG294



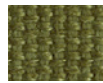
Tangelo
WIG295



Cornflower
WIG300



Naval
WIG365



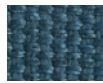
Apple
WIG384



Quarry
WIG444



Oatmeal
WIG451



Azure
WIG462



Truffle
WIG476



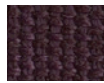
Charcoal
WIG542



Chocolate
WIG560



Wheat
WIG611



Aubergine
WIG821

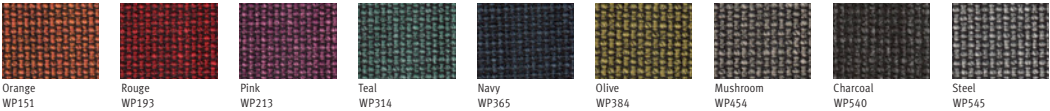
Textiles

Play

WovenImage

Content : 100% Polyester + Nanotex™, Durablock, Bioam treatments.
Width : 1420mm
Price Band : 4
Abrasion : 50,000+ Martindale cycles
Flammability : BSEN 1021.1
AS1530.3

Play
Band 4



Textiles (Vinyl)

Soiree

Innoasia

- Content : 100% Polyurethane. Anti-Bacterial and Anti-Mildew finish
- Width : 1370mm
- Price Band : 4
- Abrasion : 100,000+ Wyzenbeek double rubs
- Flammability : CAL 117-E Class 1
- Others : Anti-Bacterial tested to AATCC 147 Acceptable
Anti-Mildew tested to ASTM G21 Grade 0, JIS Z 2911 Grade 0
Hydrolysis (5 week) tested to ASTM D 3690 Pass



Textiles

Blazer

Camira

Content : 100% Virgin Wool. Non-metallic dyestuffs

Width : 1400mm

Price Band : 5

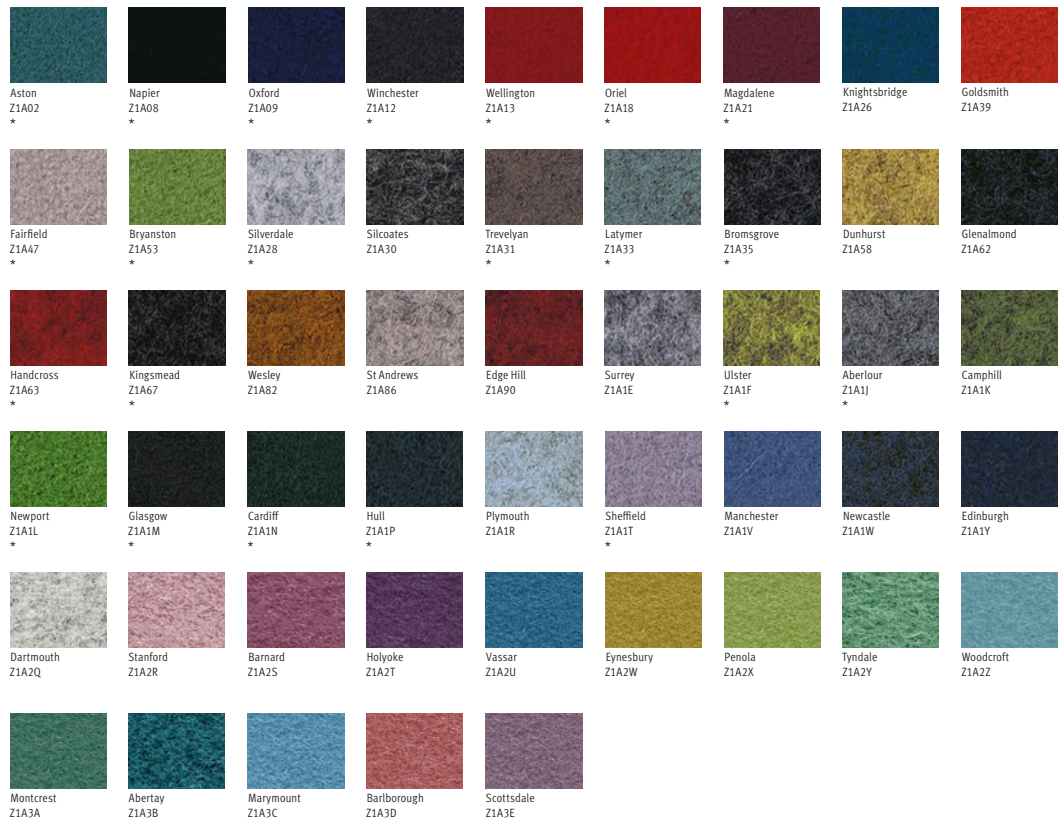
Abrasion : 35,000+ Martindale cycles

Flammability : BS EN 1021-1 cigarette

BS EN 1021-2 match

BS 7176 Low Hazard

Blazer
Band 5



* Please connect with supplier for actual swatch card.

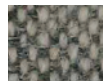
Textiles

Main Line Flax

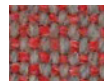
Camira

Content : 70% Virgin Wool. 30% Flax
Width : 1400mm
Price Band : 5
Abrasion : 50,000+ Martindale cycles
Flammability : BS EN 1021-1:2014 cigarette
BS EN 1021-2:2014 match
BS 7176 Medium Hazard
BS 5852 Ignition Source 5

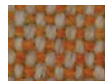
Main Line Flax
Band 5



Archway
Z1G02



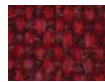
Barbican
Z1G03



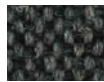
Lambeth
Z1G08



Newbury
Z1G10



Parsons
Z1G14



Temple
Z1G16



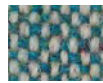
Victoria
Z1G19



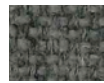
Upminster
Z1G20



Bank
Z1G23



Baywater
Z1G24



Camden
Z1G26



Edware
Z1G28



Goldhawk
Z1G31



Brompton
Z1G35



Northfields
Z1G40

Textiles

Synergy

Camira

Content : 95% Virgin Wool. 5% Polyamide. Non-metallic dyestuffs.
Width : 1400mm
Price Band : 5
Abrasion : 100,000+ Martindale cycles
Flammability : BS EN 1021-1:2014 cigarette
BS EN 1021-2:2014 match
BS 7176 Low Hazard

Synergy
Band 5



* Please connect with supplier for actual swatch card.

Textiles

Zip

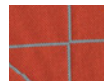
WovenImage

Content : 100% Polyolefin
Width : 1370mm
Price Band : 5
Abrasion : 43,000 Martindale cycles
Flammability : AS 1530.3
AS 3837 Group 1
BS 5852 Part 1: Source 0
CAL 117

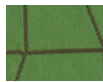
Zip
Band 5



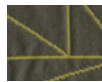
Zip
V8525



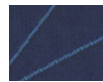
Zip
V8517



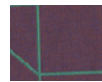
Zip
V8536



Zip
V8561



Zip
V8530



Zip
V8524



Zip
V8554

Textiles

Manner

Maharam

Content : 100% Recycled Polyester
Width : 1370mm
Price Band : 5
Abrasion : 100,000 Wyzenbeek double rubs
Flammability : CA TB 117-2013
NFPA 260

Manner
Band 5



Textiles

Messenger

Maharam

Content : 78% Post-Industrial Recycled Polyester , 15% Polyester, 7% Nylon

Width : 1370mm

Price Band : 5

Abrasion : 100,000 Wyzenbeek double rubs

Flammability : CA TB 117-2013

Messenger
Band 5



Textiles

Metric

Maharam

Content : 51% Recycled Polyester , 49% Polyester

Width : 1370mm

Price Band : 5

Abrasion : 60,000 Wyzenbeek double rubs

Flammability : CA TB 117-2013

NFPA 260

Metric
Band 5



Cardinal
Z312



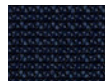
Lava
Z313



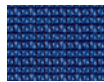
Alligator
Z320



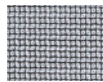
Anchor
Z324



Admiral
Z326



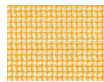
Seaport
Z327



Film
Z331



Midday
Z334



Sunny
Z340

Textiles

Mode

Maharam

Content : 80% Post-Consumer Recycled Polyester , 20% Polyester

Finish : PFOA-Free Stain Resistant

Width : 1370mm

Price Band : 5

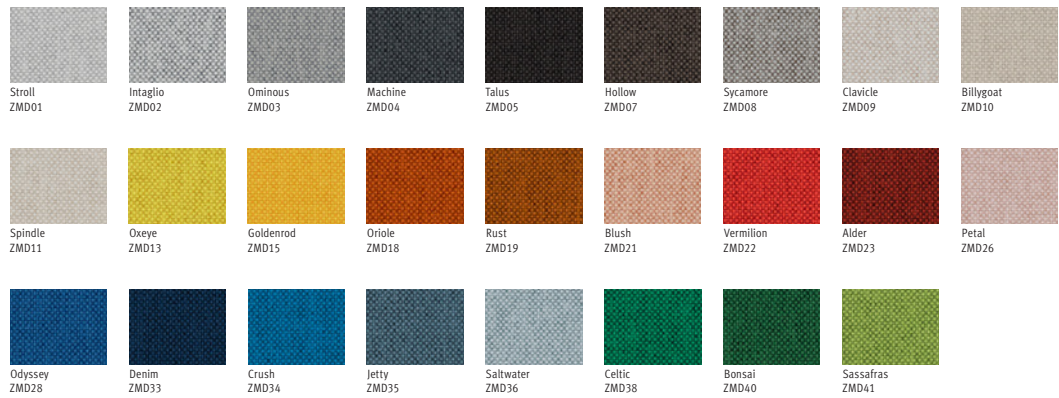
Abrasion : 100,000 Wyzenbeek double rubs

Flammability : ASTM E 84

CA TB 117-2013

NFPA 260

Mode
Band 5



Textiles

Hemp


Camira

- Content : 60% Virgin Wool. 40% True Hemp. Non-metallic dyestuffs
- Width : 1400mm
- Price Band : 6
- Abrasion : 50,000+ Martindale cycles
- Flammability : BS EN 1021-1&2 Cigarette & Match
BS 5852 Ignition Source 5d

Hemp
Band 6



For more information, please visit [hermanmiller.com/asia](https://www.hermanmiller.com/asia)

HermanMiller and  are registered trademarks of Herman Miller, Inc.
Sabha Collaborative Seating is a trademark of Herman Miller, Inc.

©2020 Herman Miller Asia Pacific
All rights reserved.